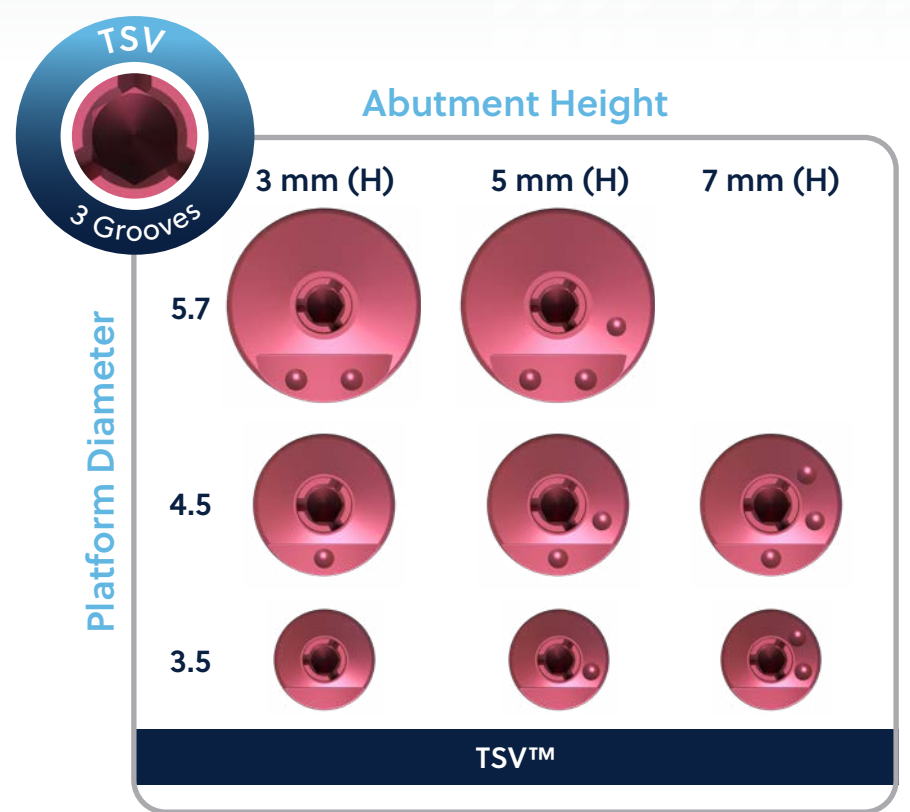
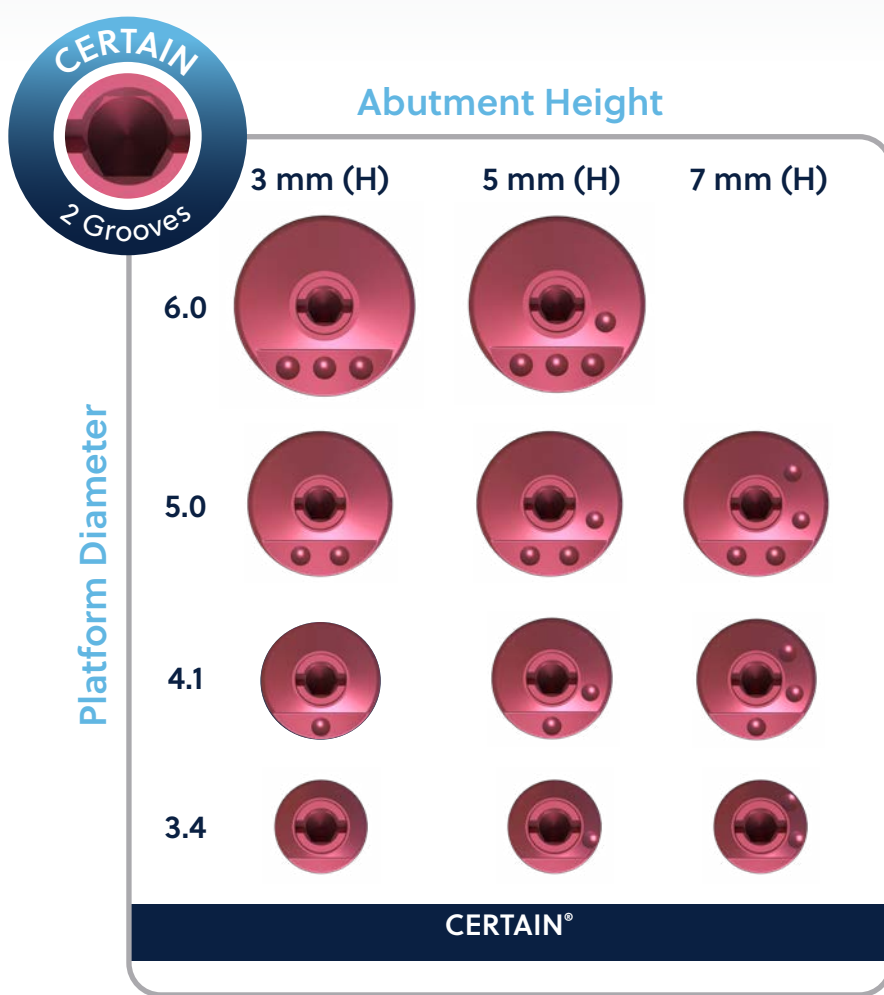


# BellaTek® Encode® Emergency Code Map



Grooves on the occlusal surface of the screw identify the implant system.  
Number of dimples below the straight line on the abutment occlusal indicate platform diameter.  
Number of dimples on the right side of the abutment's occlusal dome indicate abutment height.

Folding Line

# BellaTek Encode Emergency Alignment

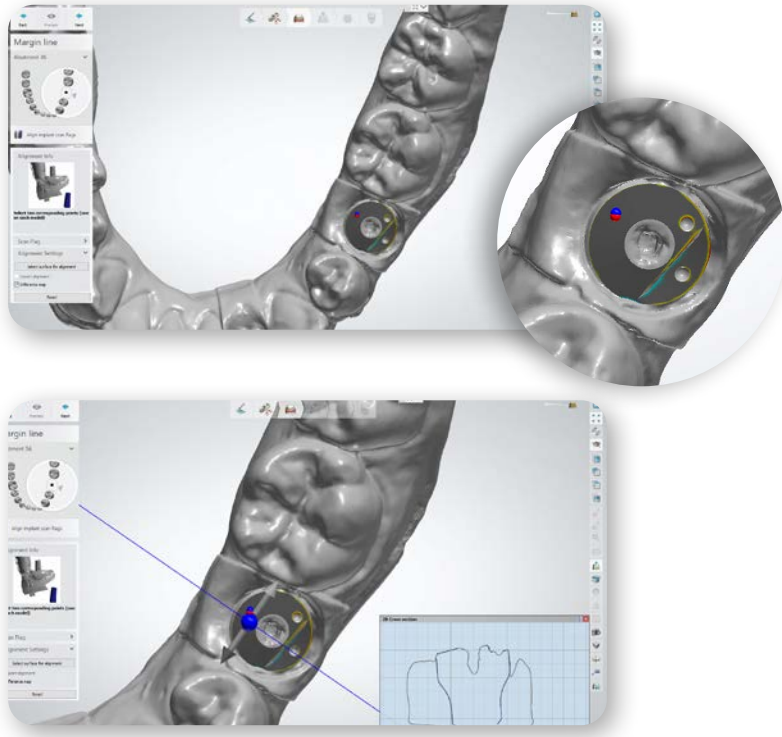


A 1-point alignment may be sufficient to align BellaTek Encode Emergency healing abutment. Use any area on the occlusal dome of the abutment for alignment.

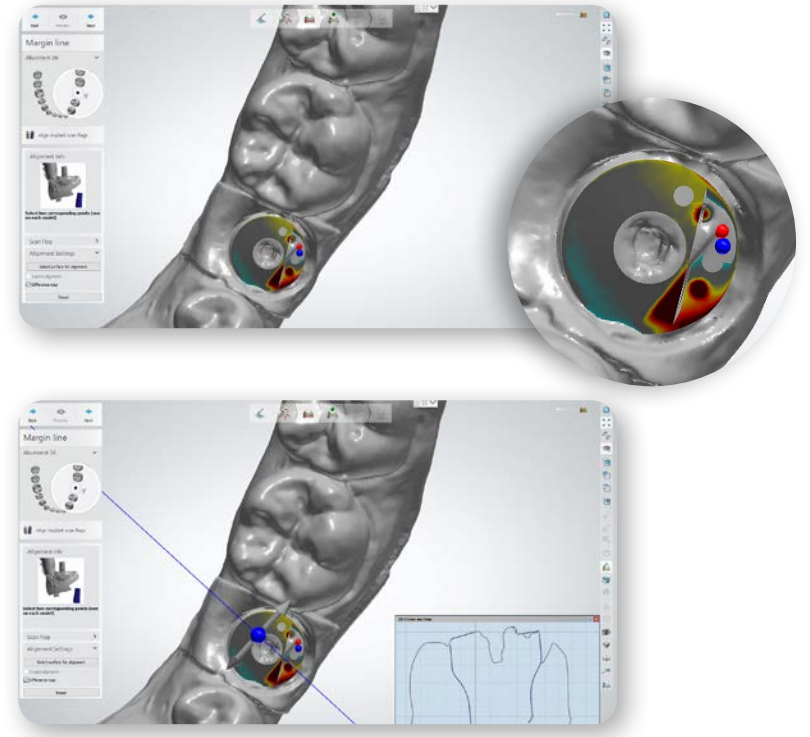
**Do not use the dimples on the occlusal as alignment points.**

NOTE: For the 3.8mm emergence profile is recommended the use of 3-point alignment option.

Example of difference map – **Successful**  
1-point alignment

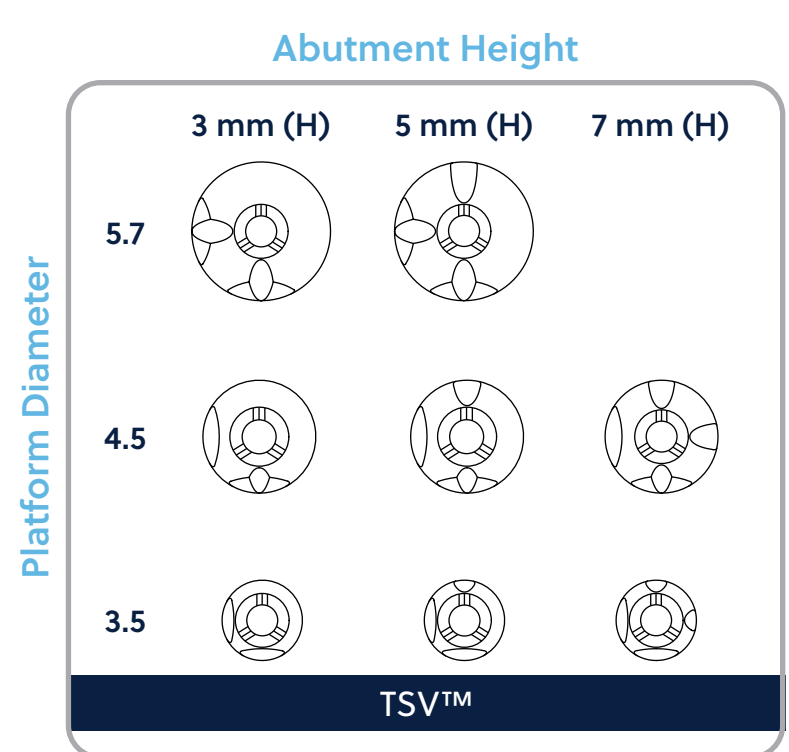
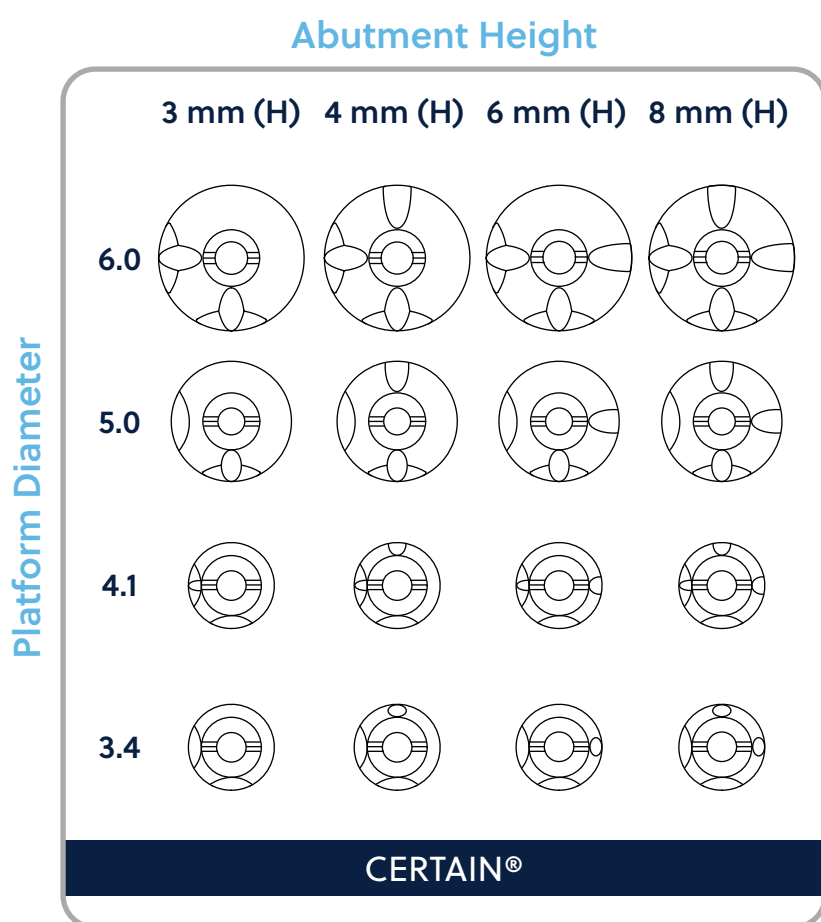


Example of difference map – **Unsuccessful** Alignment  
NOTE: Do not use the dimples on the occlusal as alignment points



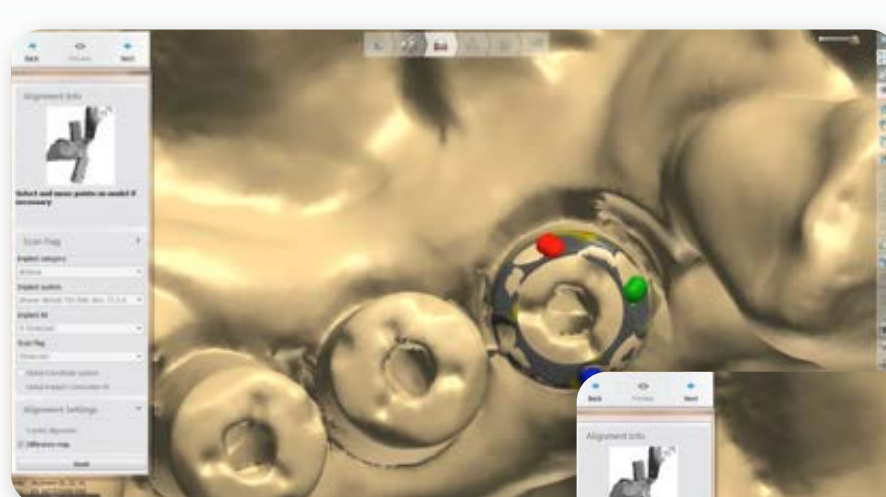
Folding Line

# BellaTek Encode Code Map

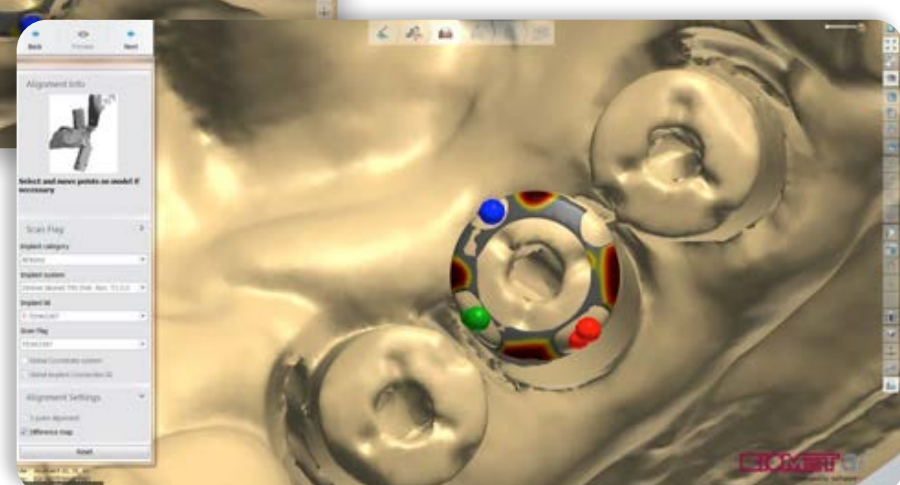


Folding Line

# BellaTek Encode Alignment



Example of difference map – **Successful** Alignment



Example of difference map – **Unsuccessful** Alignment

