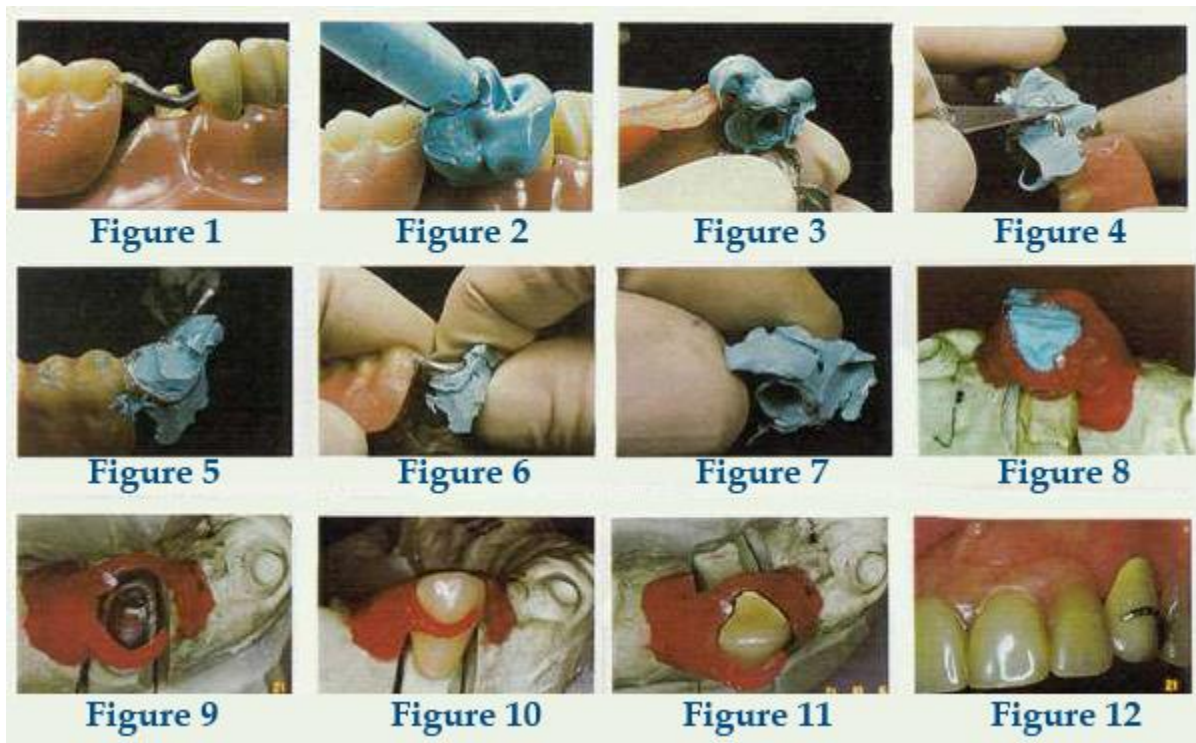


Crown Under Existing Partial



1. Prepare the tooth for a crown as usual and take the working impression using whatever technique and materials you prefer.
2. Insert the RPD in the mouth and assure that it is properly positioned. (Figure 1).
3. Inject Blu-Mousse Super-Fast over the preparation. Continue expressing the material until the clasps and occlusal rests are completely covered (Figure 2). Because Blu-mousse has the fluffy consistency of whipped-cream, it will not flow. Therefore, there is no need to use a confining tray.
4. Remove the RPD in 30 seconds with the Blu-Mousse blob attached (Figure 3). Notice the impression of the preparation.
5. Using a blade, carefully trim away the Blu-Mousse until the outer surfaces of the clasps and rests are exposed (Figure 4). Cut away any additional material that prevents the Blu-mousse index from being removed (Figure 5).
6. Remove the index from the partial denture by pushing it in an apical direction (Figures 6 & 7).